

NLTP

National Land Transport Programme

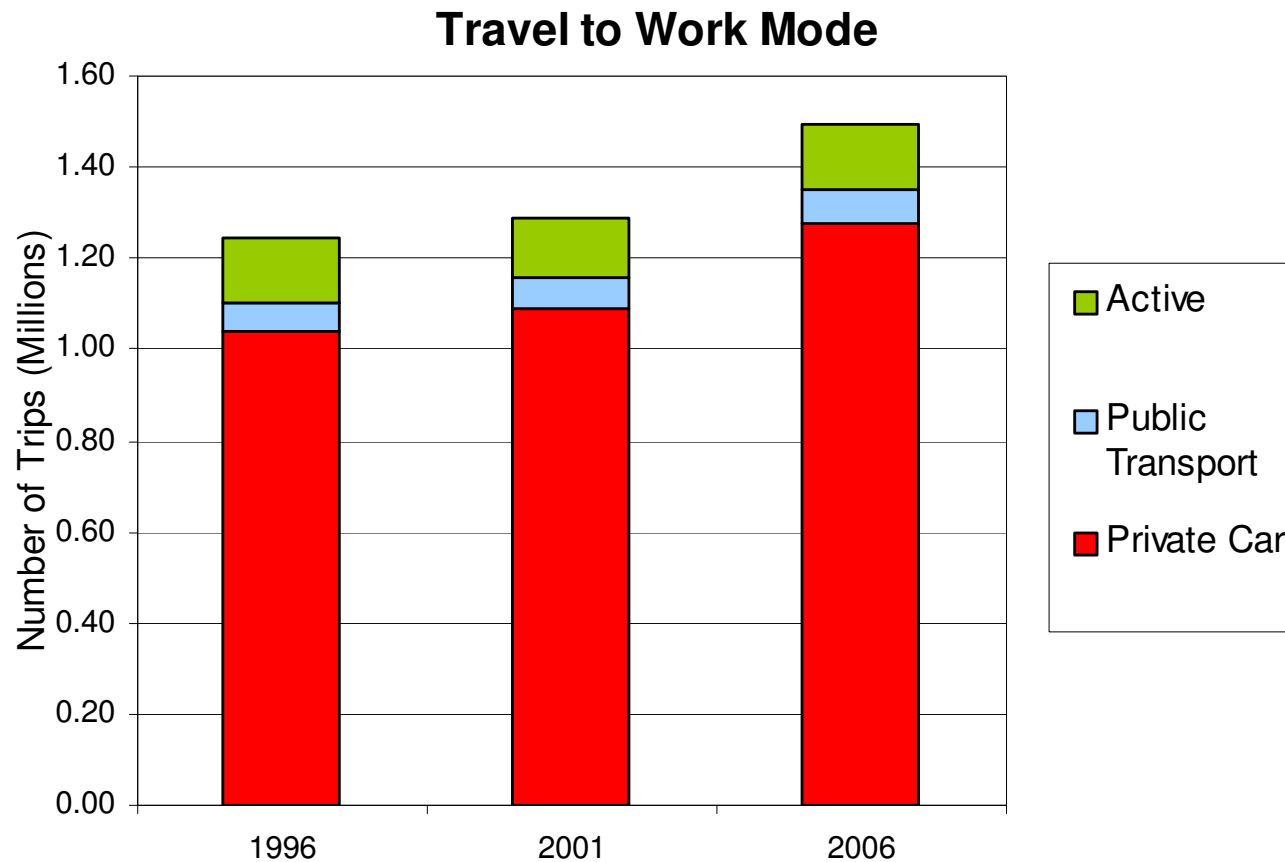
2007/08



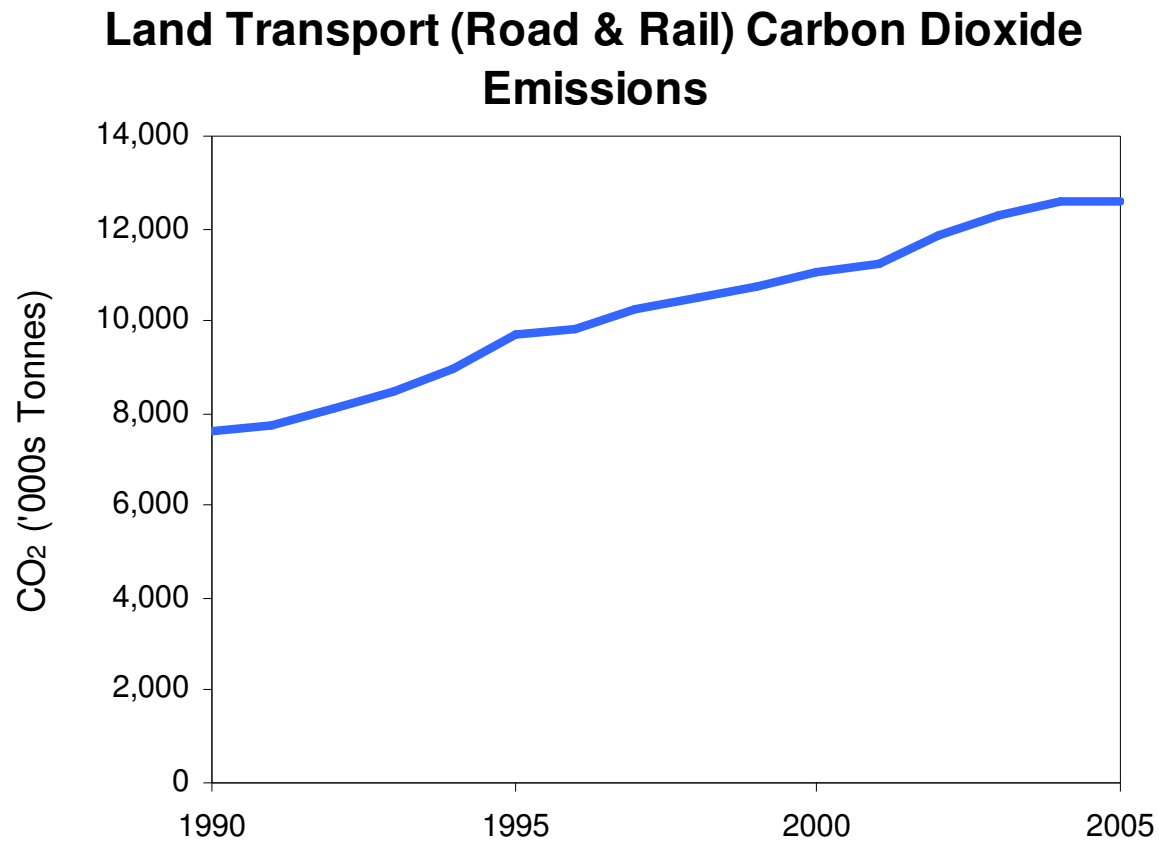
There are challenges

- Sustainability
 - Improving level of service
 - Reducing environmental impacts
- Safety
 - Reducing crash rates

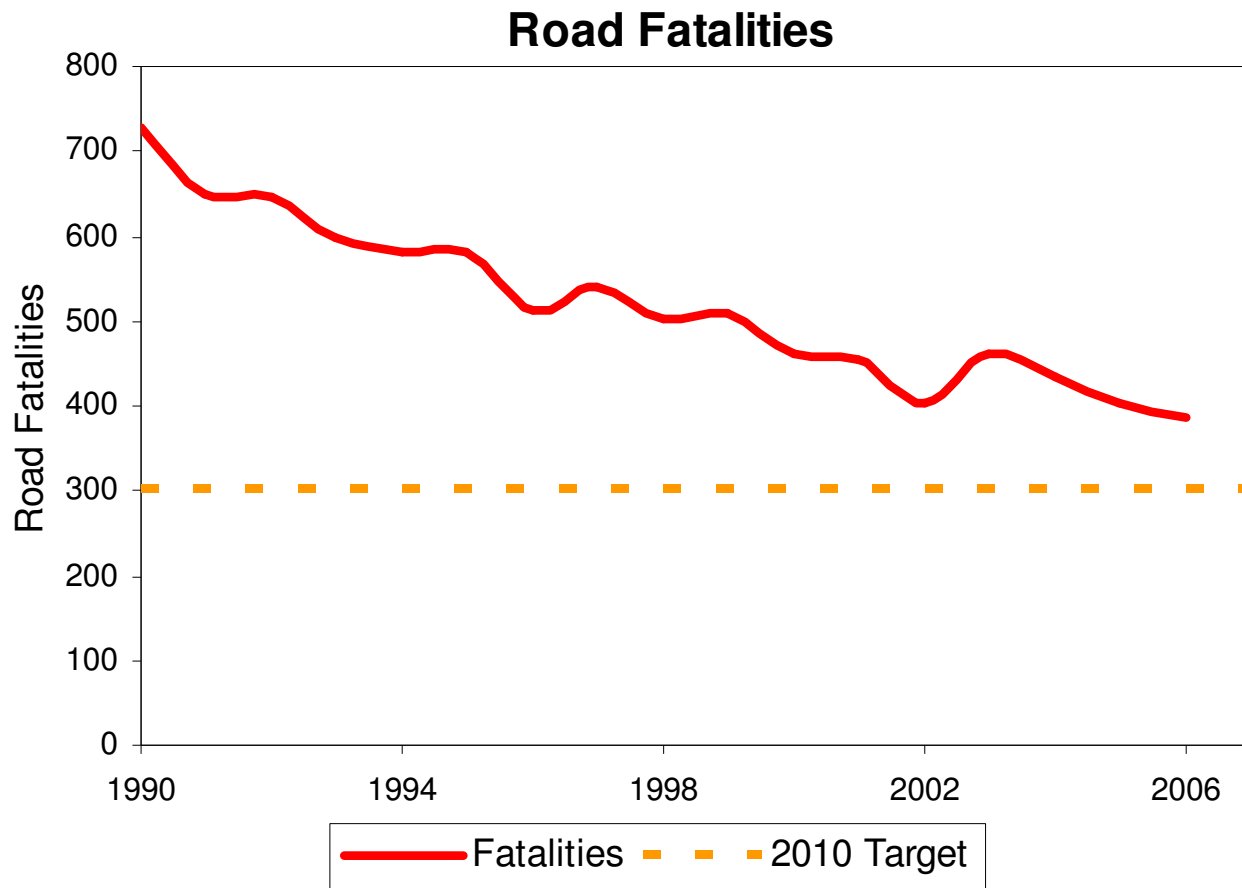
Vehicle use is growing



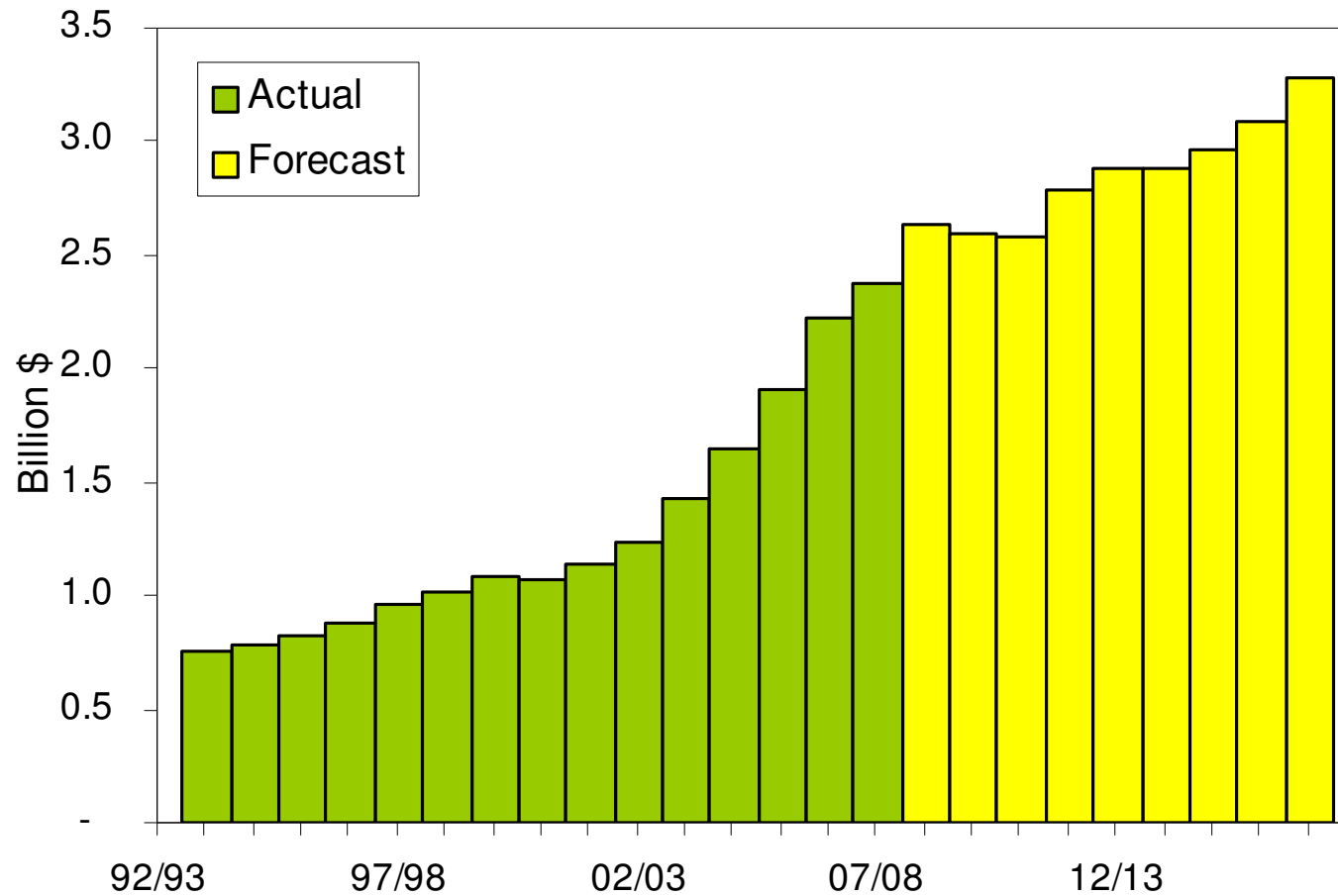
CO₂ emissions are increasing



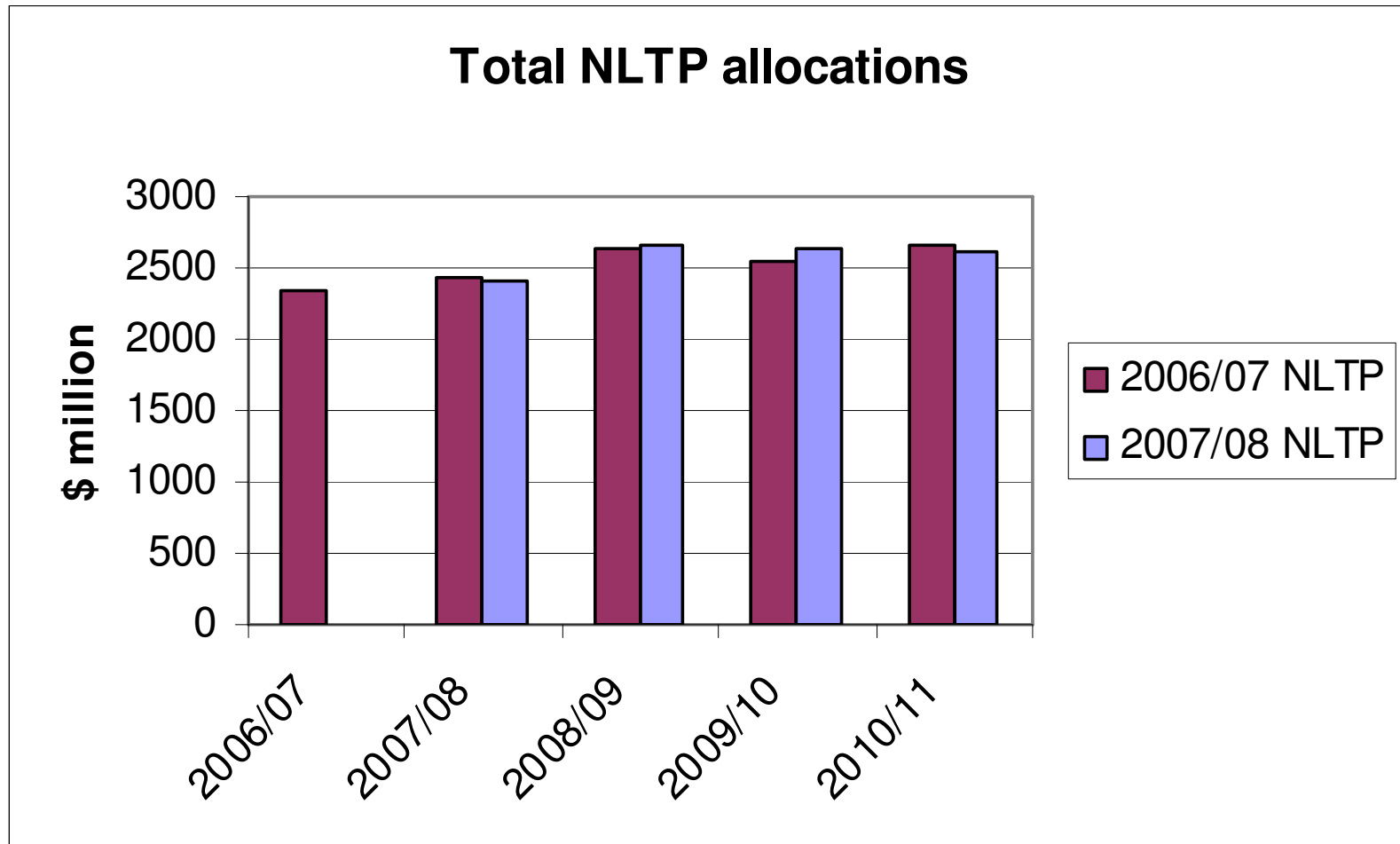
Safety targets are a challenge



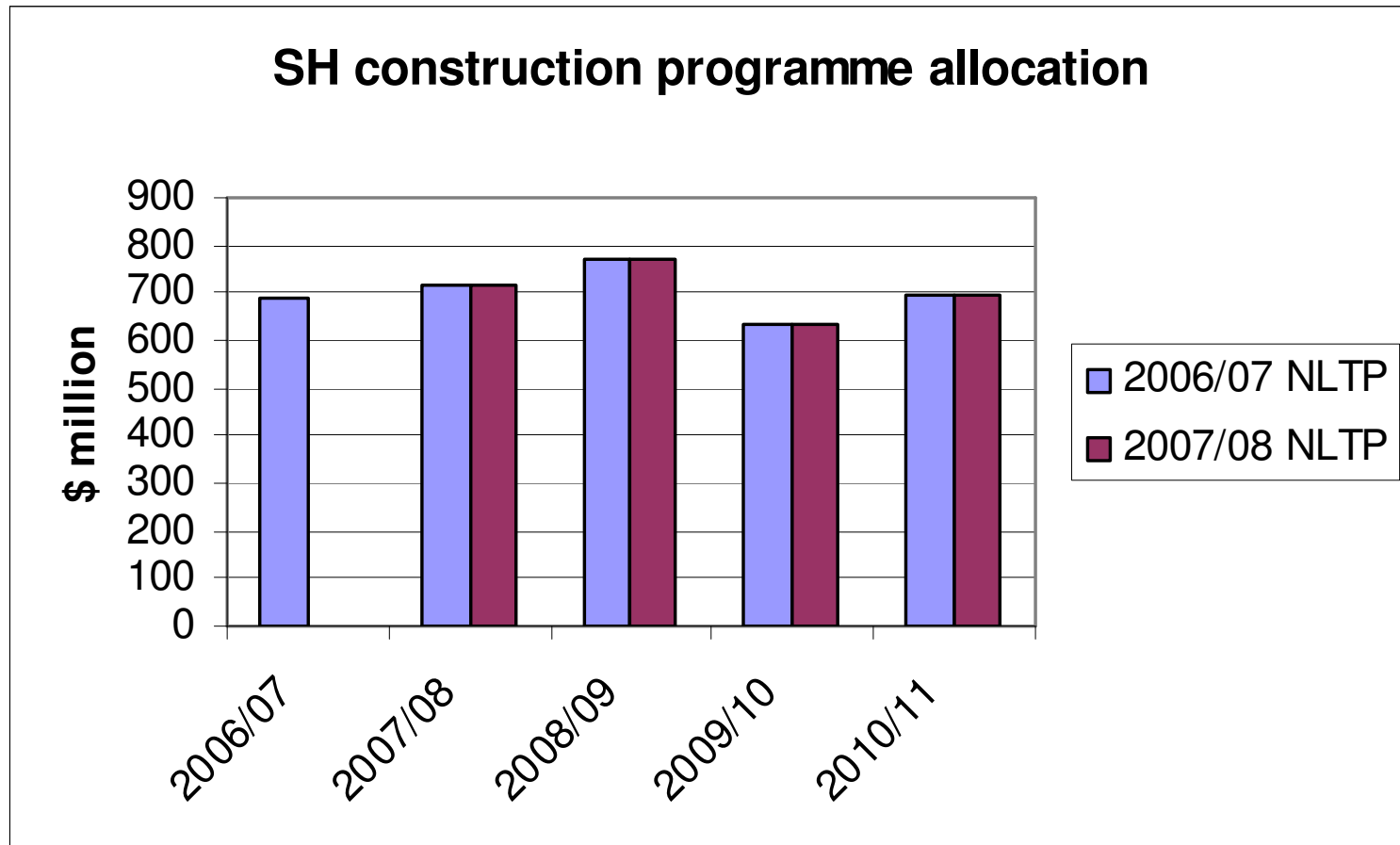
NLTP expenditure is increasing



Funding levels confirmed



SH construction funded



Funding to match revenue

- R funds to be spent over next 7.5 years to match revenue
- Rate of expenditure set to increase
- More local roading projects to be R funded

Looking forward

- 3 year funding
- Greater confidence
 - Gain funding confidence
 - Need confidence that programmes are optimised

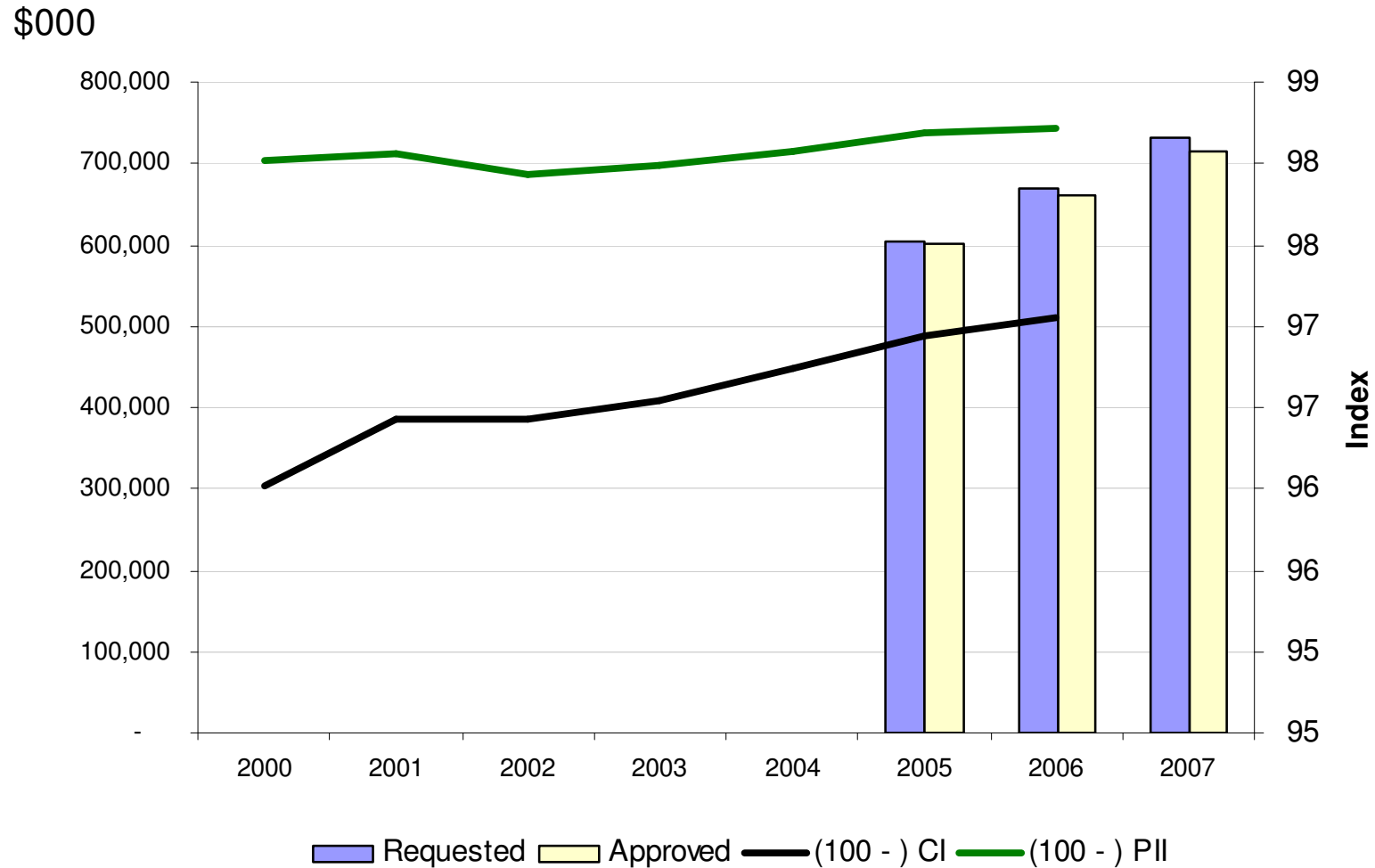
Future emphasis in plans

- Emphasise activities that improve the sustainability and safety of transport
 - Reduce the need to travel
 - Networks support increased walking & cycling
 - Passenger transport use increases
 - Traffic flows more efficiently
 - Fatal and serious injury crashes reduce

Funding approval before expenditure

- Obtain funding approval before:
 - incurring expenditure
 - committing to future expenditure (e.g. tenders)
- Assessment of a lower priority than other applications may lead to
 - no funding
 - partial funding

Maintenance approvals



Delivery of submitted programmes

